

## Achterhaus Residency Hamburg

Ruhrstrasse 88



## The building

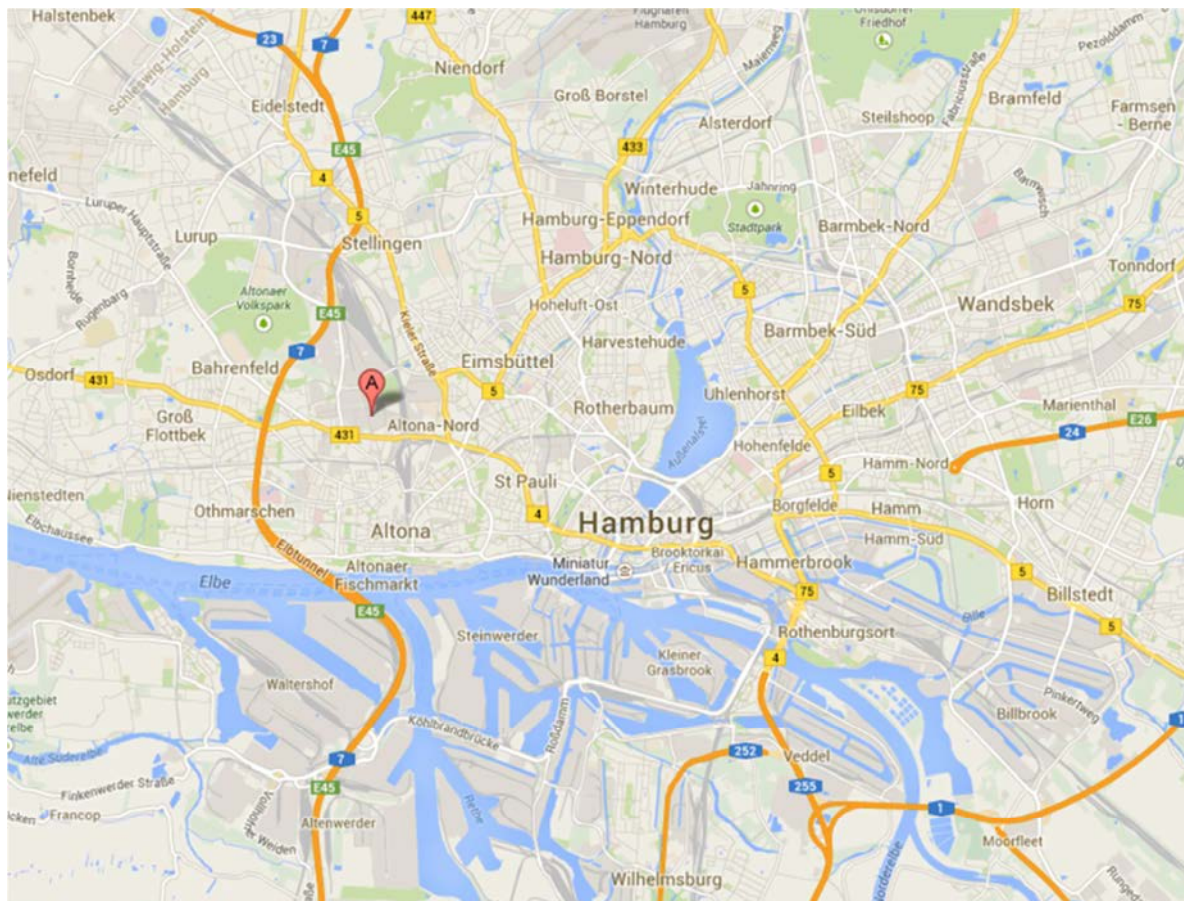
The atelier community Achterhaus in Bahrenfeld opened its doors in November of 2013. The old wallpaper factory has been renovated and now offers 24 studios for 33 artists and candidates for artists-in-residence fellowships working in the visual arts – from set design to illustration.

The building is located in Bahrenfeld – a district of Hamburg shaped by industry and living quarters, which started attracting more and more artists and creatives. Bahrenfeld is in the western quarter of the city of Hamburg and subject to the district/borough Bezirk Altona.

There are several supermarkets nearby, as well as restaurants in walking or bicycle ride distance, e.g. in the lively district Ottensen.

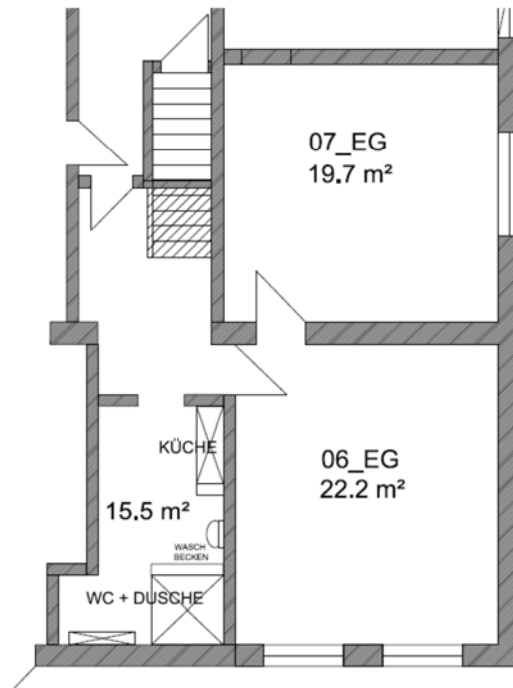
For more information please have a look on the website of the atelier community:

[www.atelierhaus-ruhrstrasse.de](http://www.atelierhaus-ruhrstrasse.de)



### The studio facilities

The apartment is on the ground floor and 55m<sup>2</sup> big. It has two sizeable rooms: a studio with 22m<sup>2</sup>, a bedroom with 21 m<sup>2</sup> and bathroom and kitchen with 10 m<sup>2</sup>. There are windows in each of the bigger rooms which offers good lighting. The apartment is the only apartment in the building, all the other rooms are working studios.



### Amenities

- Double bed
- Bedding / Towels
- Shelf system for clothes
- Simple wardrobe
- Sofa / chairs
- Working Table
- Living room table
- Sideboard
- Lamps
- Broom, and cleaning materials
- Kitchen (Cooking utensils and basic ingredients)
- Cooking pans
- Dishes
- Glasses
- Kitchen table / chairs
- Kitchen cloths
- Washing machine
- Clothes drying rack
- Stereo device
- Free Internet access via Airport
- Bicycle

Outside



**Bedroom**







Studio



**Kitchen**




**Bathroom**



**Directions**




#### **A. Transit directions from Hamburg Central Station**

1.  S21 Commuter train towards Hamburg Elbgaustraße (10 mins, 4 stops)
2. Get out at stop Hamburg Diebsteich and walk to Ruhrstraße 88 (about 12 mins)
3. Head west on Diebsteichtunnel towards Schleswiger Straße
4. Turn left onto Schleswiger Straße
5. Turn right onto Leunastraße
6. Turn left onto Ruhrstraße, Destination will be on the left

Travel Time 22 Minutes

#### **B. Transit directions from Hamburg Airport**

1.  S1 Commuter train towards Wedel (Holst) (37 mins, 16 stops)
2. Get out at stop Hamburg-Altona(S)
3. Take Bus 288 towards Pflegezentrum/Lutherpark (8 mins, 3 stops)
4. Get of at stop Leunastraße
5. Arrive at Ruhrstraße 88

Travel Time 56 Minutes

---

#### **For further information please contact:**

Ministry of Culture and Media  
Charlotte Brinkmann  
Department of Arts and Creative Industries  
Hohe Bleichen 22  
20354 Hamburg  
Telephone: + 49 40 428 24 - 419  
[charlotte.brinkmann@bkm.hamburg.de](mailto:charlotte.brinkmann@bkm.hamburg.de)