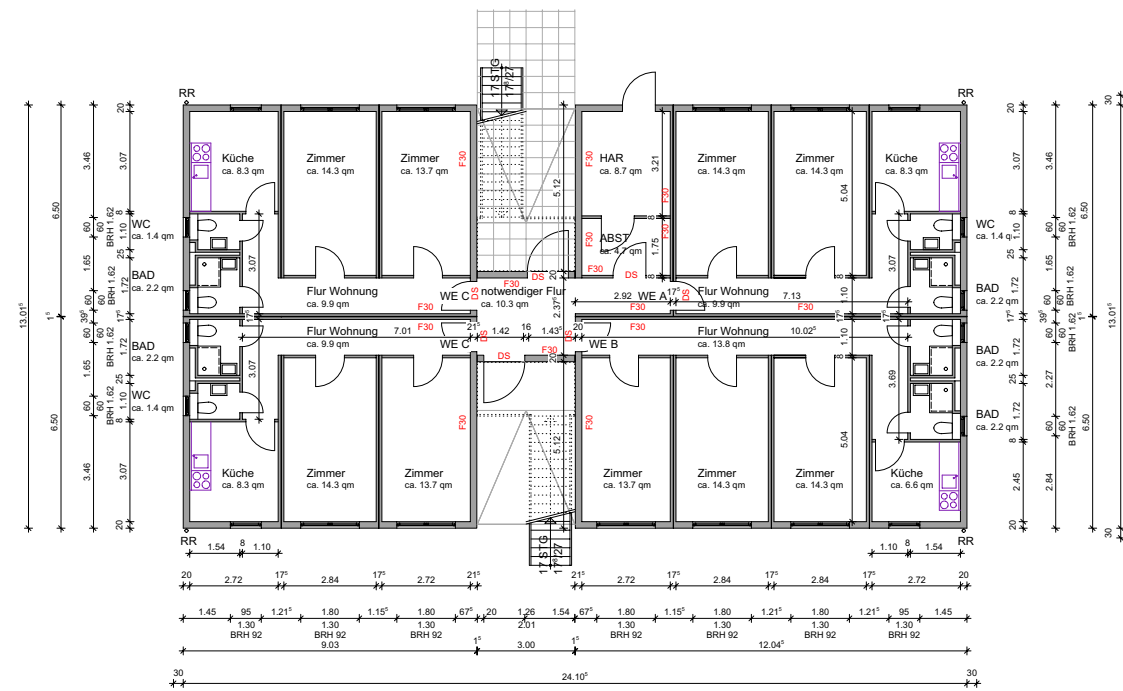
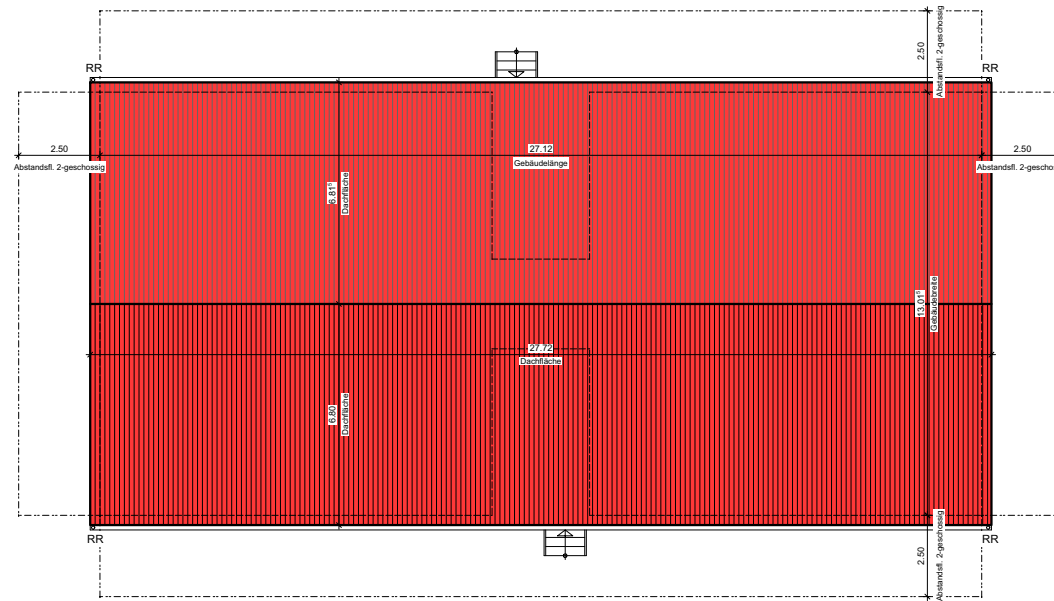


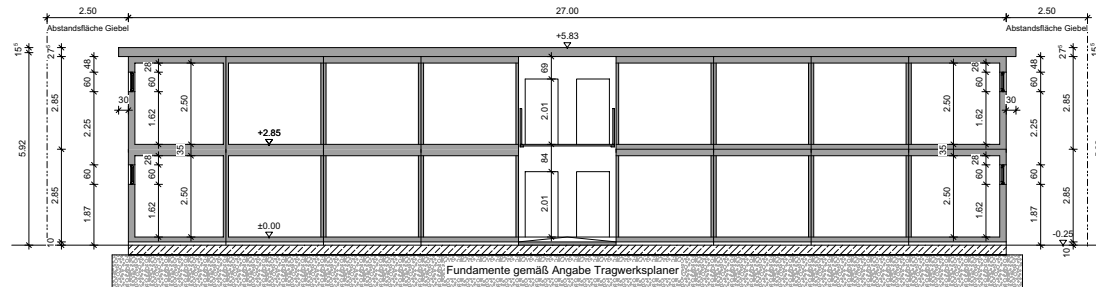
**GEBÄUDETYP 2 - 1. OBERGESCHOSS**



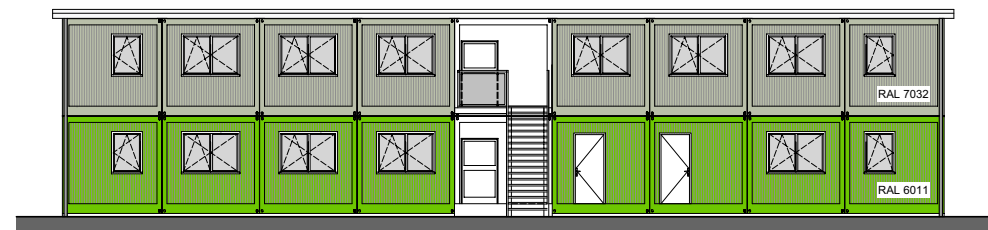
**GEBÄUDETYP 2 - ERDGESCHOSS**



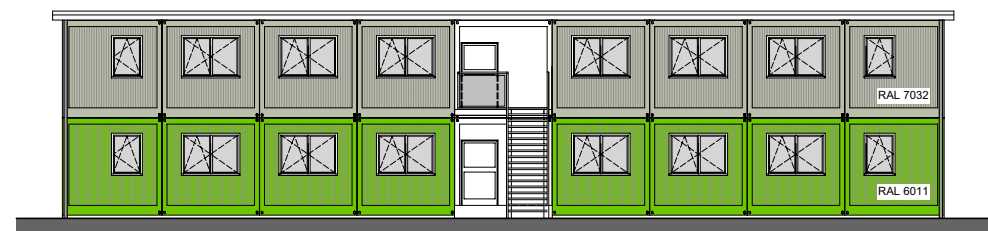
Berechnung Abstandsfläche Giebel:  
 Wandhöhe ab OK Terrain + Höhe Giebeldreieck x 0,4  
 (5,92 m + 0,155 m) x 0,4 = 2,43 m < 2,50 m



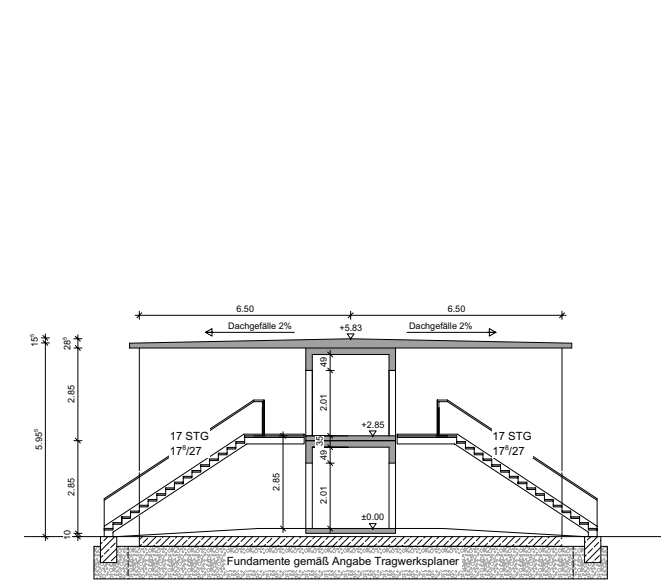
**LÄNGSSCHNITT**



**RÜCKANSICHT**

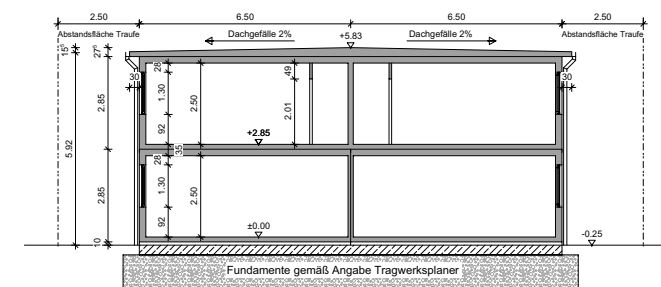


**VORDERANSICHT**

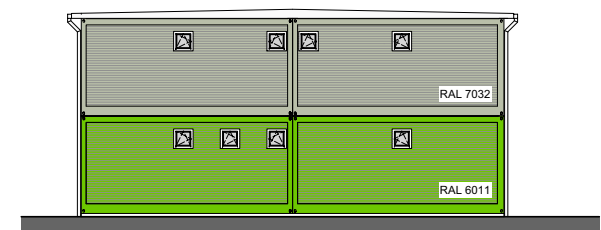


**QUERSCHNITT - TREPPE**

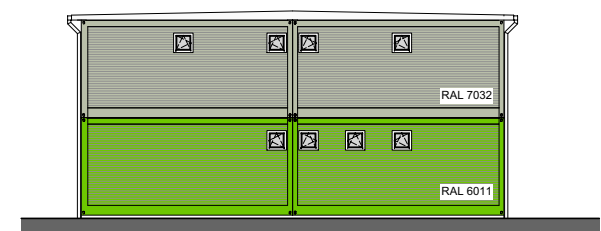
Berechnung Abstandsfläche Traufe:  
 Wandhöhe ab OK Terrain + Höhe Dachfläche x 0,4  
 (5,92 m + 0,155 m x 1/3) x 0,4 = 2,38 m < 2,50 m



**QUERSCHNITT**



**SEITENANSICHT**



**SEITENANSICHT**