



## **STORM SURGE INFORMATION FOR THE PUBLIC.**

This leaflet contains important information about storm surges, such as how you will be warned and what to do in the event of a storm surge. It is distributed to all households in the storm surge-prone area of Hamburg.

The inside of this leaflet provides information about the storm surge-prone area where you live or work. Please note that much of this area is protected by the main dyke line (red line) and could only be at risk in the very unlikely event of the flood defences failing or overflowing. The Port of Hamburg, Speicherstadt and Hafencity are exceptions to this rule. They lie in front of the main dyke line.

# **FINKENWERDER**



Hamburg

# Checklist

## General information about a storm surge

You will be warned in good time before the onset of a storm surge by:

- » Fireworks (harbour and surrounding area),
- » Loudspeaker announcements (HafenCity, northern bank of the Elbe, evacuation areas, areas south of the Elbe),
- » Radio warnings,
- » German warning app NINA

In the event of a very severe storm surge, also by:

- » Subtitles on television,
- » Siren signal (one-minute rising and falling wail)
- » Cell broadcast

## You should then do the following:

Switch on the radio!  
e.g. Radio Hamburg or  
NDR 90.3



Pay attention to  
loudspeaker  
announcements!



Follow the instructions  
given by the authorities!



Tell the neighbours!



## Correct behaviour in the event of a forecast of a very severe storm surge of more than +7.30 m above sea level

Go to higher floors  
in the **warning area!**



Leave the marked  
**evacuation zones!**



Go to higher floors  
if you can no longer  
leave the **evacuation zone!**



Sick, infirm, disabled people  
who have no other help can  
contact 112 to leave the  
area in case of evacuation.



Take important documents,  
important medicines and  
money with you!



If you still have time:

- » Turn off electricity and gas!
- » Have a torch ready!
- » Protect your possessions and move valuable items to upper floors!
- » Move chemicals, paints, fuels, etc. to upper floors!
- » Fill heating oil tanks with water if necessary to prevent floating!

# Escape to upper floors

In the event of a very severe storm surge of more than +7.30 m above sea level, the following instructions apply:

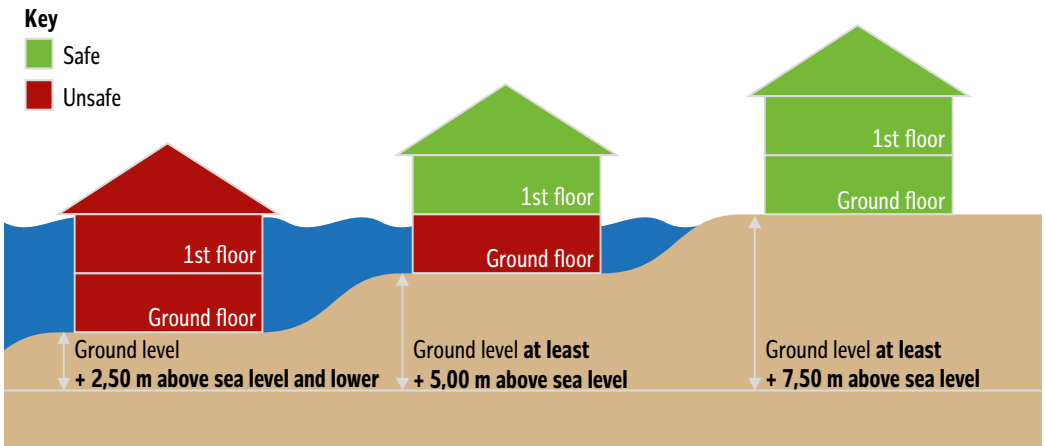
If you live in the **evacuation zone**, you must definitely leave your apartment / house!

If you live in the **warning area**, please check whether your apartment / house offers sufficient protection. The graphic below is intended to help you with this.

Find out the altitude of your apartment / house, if you do not know it.

The use of internet geoportals, GPS devices, apps for altitude measurement as well as maps with altitude information can be helpful.

You can also get help with this at [www.hamburg.de/katastrophenschutz](http://www.hamburg.de/katastrophenschutz)



This graphic is intended to explain the wording “escape to upper floors” in more detail. It only applies to the warning area and refers to a floor height of 2.50 m. If you have different storey heights, you must take these into account.

Alle Informationen auch online und in leichter Sprache verfügbar:

All information also available online in English:

Вся інформація також доступна онлайн українською мовою:

Wszystkie informacje dostępne także online w języku polskim:

Tüm bilgiler çevrimiçi olarak Türkçe olarak da mevcuttur:

جميع المعلومات متاحة أيضًا على الإنترنت باللغة العربية



[www.hamburg.de/katastrophenschutz](http://www.hamburg.de/katastrophenschutz)

# Storm surge forecasts – who informs you?

**Storm surges are natural events. The forecasts depend on the prevailing weather conditions. These can change significantly within a very short time. Therefore, keep yourself informed about the current forecasts.**

You can obtain information about the expected water level by calling the following numbers:

Storm surge announcement service 040 / 428 99 11 11

Federal Maritime and Hydrographic Agency (BSH) 040 / 31 90-31 90

Automatic water level announcement gauge St. Pauli 040 / 428 47 66 02

You can find further information at [www.hamburg.de/katastrophenschutz](http://www.hamburg.de/katastrophenschutz) and also find links to the current storm surge and flood forecasts from the Federal Maritime and Hydrographic Agency (BSH) and the Hamburg Storm Flood Warning Service (WADI). You can also read the water levels of Hamburg's inland waters on the Hamburg Inland Flood Warning Portal (WaBiHa).

**In the event of a storm surge forecast of more than 4.50 m above sea level, the forecasts of the Hamburg Storm Surge Warning Service (WADI) are exclusively authoritative for Hamburg!**

## How are you warned?

Official warnings and hazard information in Hamburg are issued by the police, the fire department, the Hamburg storm surge warning service or the central disaster service team of the Hamburg Interior and Sport Authority.

Depending on the urgency, the warnings are distributed via regional radio stations, the digital billboards in the city or via cell broadcast. You can receive current warning messages with recommended actions and behavioral tips directly to your cell phone using the free NINA warning app, provided your cell phone is not switched off or in airplane mode.

Sirens warn you of extreme danger. You will then receive more detailed information in NINA. The **WarnWetter** app from the German Weather Service warns you of weather hazards such as storms, icy roads, snow, heat and more.

## Any other questions?

Then please contact the disaster control department of your district office (Bezirksamt) or the Ministry of the Interior and Sports: Your direct line to the Hamburg government departments is the **HamburgService phone number** on **115**, where you will be referred accordingly.

Published by:

Ministry of the Interior and Sports

Ministry for the Environment, Climate, Energy and Agriculture

[www.hamburg.de/katastrophenschutz/](http://www.hamburg.de/katastrophenschutz/)

last updated: September 2024

# Storm surge information for residents of Finkenwerder

In the event of storm surges of more than 7.30 m above sea level, large parts of Finkenwerder are at risk. However, no firmly defined evacuation zones have been designated for these areas because terrain heights and buildings vary greatly. Most residents can remain in Finkenwerder, as their residential buildings offer sufficient protection. Please check the map to see the elevation (in relation to sea level) of where you live.

The district of Finkenwerder as a whole is at risk of flooding in the event of dyke overflows and breaches; the water can rise to 5.00 m or, in the old town centre, to 5.30 m above sea level.

If you live on higher ground or in residential buildings with higher floors (higher than 5.00 m above sea level or 5.30 m), evacuation is not necessary.

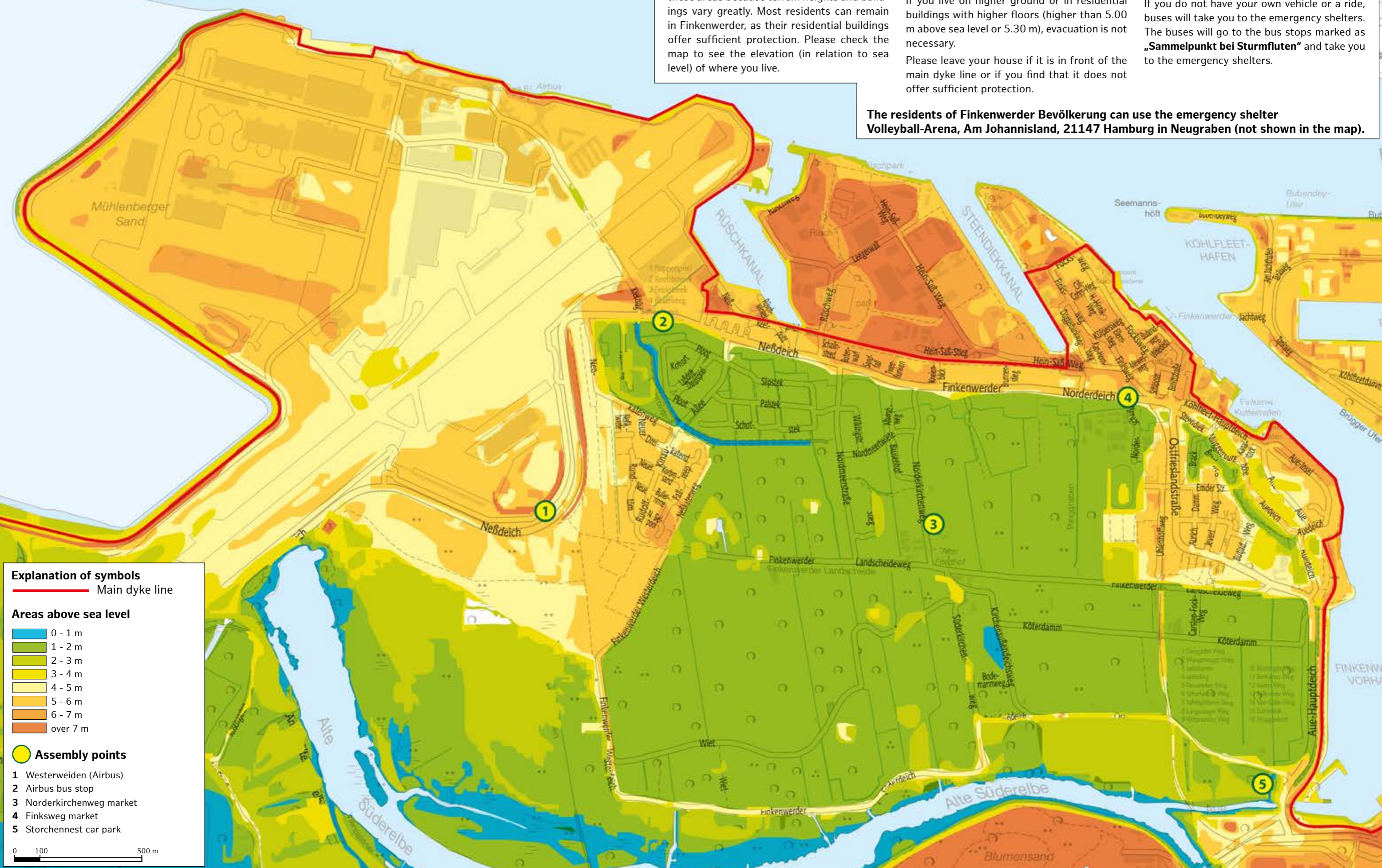
Please leave your house if it is in front of the main dyke line or if you find that it does not offer sufficient protection.

Emergency shelters are available in Neugraben in case of evacuation.

If you have to leave the evacuation zone, use your own vehicle if possible.

If you do not have your own vehicle or a ride, buses will take you to the emergency shelters. The buses will go to the bus stops marked as „Sammelpunkt bei Sturmfluten“ and take you to the emergency shelters.

**The residents of Finkenwerder Bevölkerung can use the emergency shelter Volleyball-Arena, Am Johannisland, 21147 Hamburg in Neugraben (not shown in the map).**



**Explanation of symbols**

Main dyke line

**Areas above sea level**

- 0 - 1 m
- 1 - 2 m
- 2 - 3 m
- 3 - 4 m
- 4 - 5 m
- 5 - 6 m
- 6 - 7 m
- over 7 m

**Assembly points**

- 1 Westerweiden (Airbus)
- 2 Airbus bus stop
- 3 Norderkirchenweg market
- 4 Finksweg market
- 5 Storchennest car park

0 100 500 m